

## Unparalleled sensing in a compact package.

### Weight - 357 grams

With flexible set-up options, Altum integrates with any drone that can carry it.

### Power - 5.5/7.0/10W (standby, average, peak)

Altum has a large voltage range, making complex integrations simpler and more reliable.

### DLS 2

With an integrated GPS, DLS 2 is our most accurate light sensor yet. With patented, cutting-edge technology, it provides more accurate and reliable data.

### Center Wavelengths

Blue 475 nm, Green 560 nm, Red 668 nm, Red edge 717 nm, Near infrared 840 nm, and Thermal 11  $\mu$ m.

### Storage

High capacity USB 3.0 storage.

### Radiometric Calibration

Thermal and multispectral sensors are radiometrically calibrated.

## Altum Kit Comes With....

- Altum sensor.
- Lens cover.
- External storage device (USB 3.0) - 128 GB.
- Calibrated Reflectance Panel.
- New DLS 2 light sensor with integrated GPS.
- Camera and light sensor cables.
- Mounting screws.
- Hard carrying case.

Turning imagery into actionable information.  
2018 MicaSense, Inc.

## THE ALTUM SENSOR



(Re)defining agricultural drone imaging.

MicaSense®  
SENSORS

## MicaSense Altum: Thermal, multispectral, and high-resolution imagery in one sensor.

The ultimate solution for accuracy, flexibility, and power—everything you have come to expect from MicaSense. Altum produces aligned thermal, multispectral, and high-resolution imagery in one flight for advanced analytics. Capture data on plant health, phenotype, and water stress in a single flight. Fly longer with high capacity USB storage. Integration is simple with multiple interface options and embedded mounting points.

## Key Features

- Synchronized capture of multispectral, thermal, and high-resolution imagery.
- Calibrated thermal and multispectral outputs.
- High resolution multispectral images.
- USB 3.0 storage.
- Fast capture rate.
- Integrates with any drone that can carry it.

## Applications include...

Phenotyping, crop health mapping, water stress analysis, scouting for leaks, fertilizer management, zone mapping, high altitude flights, disease identification and more!

Visit us at [micasense.com/altum](https://micasense.com/altum) to learn more.

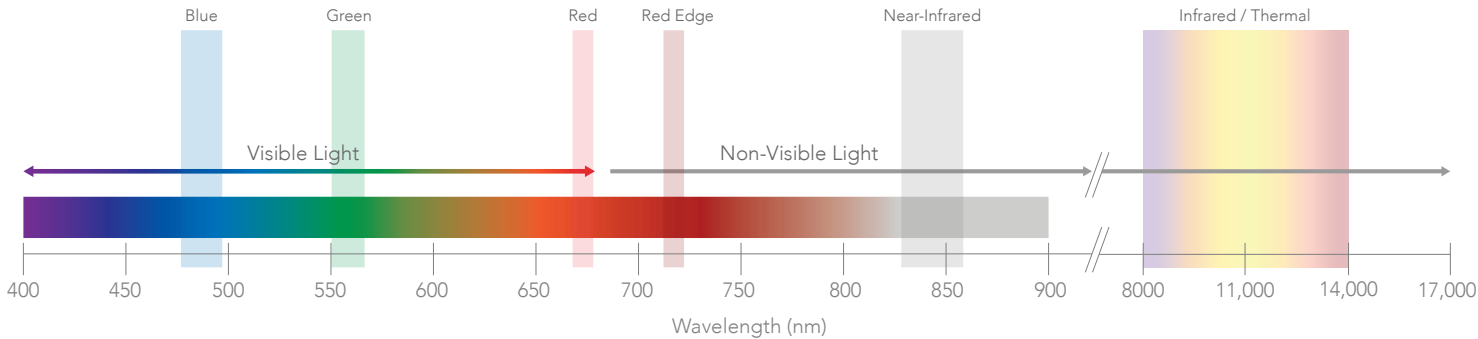
MicaSense, Inc. | [www.micasense.com](https://www.micasense.com) | Made in the USA



► One sensor to do the job of three.

Capture data on plant health, phenotype, water stress and more using one sensor, in one pass. Use Altum imagery to do more than just confirm what you already know—use multi-layered data so you can confront multifaceted issues.

Altum opens the door to advanced analytics for researchers and enterprise level growers, and empowers service providers to take on more complicated projects. Synchronized and calibrated outputs provide three times the information in just one flight, and dramatically reduces post-processing time.



► More detail from 400 ft.

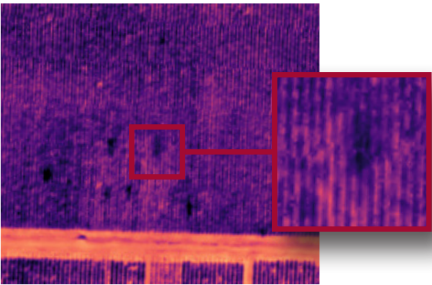
Altum’s high-resolution imagers mean you don’t need an extra RGB camera. Less gear and streamlined data capture ensure that you can spend more time analyzing your data and less time flying.

► Synchronized thermal and multispectral imagery

The MicaSense Altum captures six bands - red, green, blue, red edge, near-infrared and thermal. The capture of these bands happens at the same moment, making the data easier to align and use for analytics. Also, because there are six bands, data from Altum can be used to create anything from NDVI to digital surface models to thermal heat maps.



Pumpkin Patch - 60m. Standard-sized wheelbarrow and pumpkin detail shown in closeup.



Vineyard - 120m. Areas of increased growth, resulting from overwatering, shown as seen in Thermal layer.



Vineyard - 120m. Areas of increased growth as seen in High-Res RGB layer.

